

STOCK AVAILABLE



KITCHEN &
FURNITURE FITTINGS

INTRODUCING SWIVEL WASTEBIN

HINGE-BASED DESIGN FOR HASSLE-FREE DISPOSAL



FEATURES

- Swing-out design allows easy access to the built-in wastebin
- Fully concealed when closed, keeping the wastebin out of sight
- Sturdy metal construction for long-lasting durability
- Provides convenient waste disposal right
- Space-saving design maximizes storage and organization
- Stainless steel outer cover for better aesthetic

Note: Order soft close hinge separately

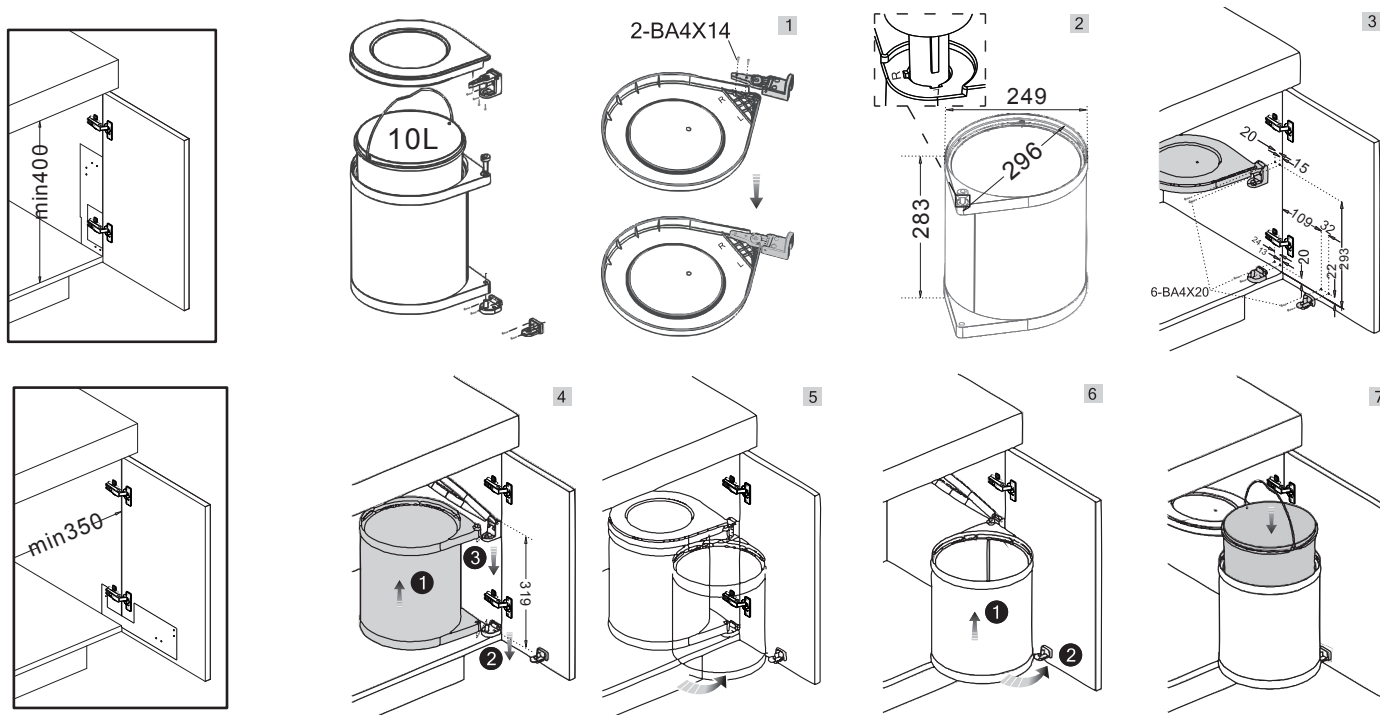
SPECIFICATIONS

- Bin capacity up to 10L
- Total loading up to 7kgs
- Min. cabinet size: Depth-Min. 350mm; Height- 400mm;
- Width-300mm
- Material: Stainless steel (frame), PVC (bins)
- Finish: Stainless steel satin, Grey

ORDERING DETAILS

Item Code	MRP
OK-RB 10L SSS	3,650/-

PLANNING DETAILS



Scan QR Code
To Explore
Kitchen & Furniture
Fittings



+91 9310012300

FOLLOW US ON    